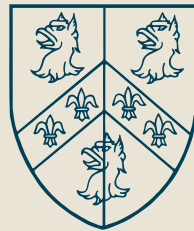


The Levine Building

Underpinning the future of Trinity College, Oxford



A History of Trinity's Buildings

1417

The Old Library:
one of the oldest
surviving buildings of
Durham College



1555

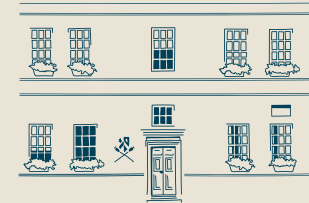
Trinity College founded
by Sir Thomas Pope

1618

Dining Hall and Beer Cellar

1665

Garden
Quad



1885

The President's Lodgings

1884

The Jackson Building

1737

Broad Street Gates

1728

Staircase 17

1713

Parks Road Gates

1691

The Chapel

1898

Kettell Hall purchased
by the college

1925

War Memorial
Library



1948

Dolphin Yard Gatehouse

1966

The Cumberbatch
Buildings,
staircases 3 & 4

1968

The Cottages restored

1992

Staircase 18

The Levine Building: transforming, inspiring & strengthening

Introduction	4
The Setting	6
The Plans	12
The Design	17
The Purpose	22
Making Your Contribution	26

Introduction

Trinity exists to provide an exemplary teaching and research environment within an internationally renowned university, currently ranked top in the world. We aim to bring our community together and to provide each individual with the opportunity to flourish academically, professionally and personally.

Whilst the college's academic community, and its international reputation, have continued to develop in recent years, our accommodation and facilities have not kept pace. It has become clear that we must transform our academic facilities, residential accommodation, social spaces and physical access, and improve our provision for graduates. The designs presented for a new building by Hugh Petter and his team at ADAM Architecture provide the means to resolve all these issues. They were honed and refined in parallel with the formulation of the college's longer-term strategy and so we're confident that they will act as a springboard for the college's aspirations. Our vision is for Trinity to be recognised as a modern college that welcomes a diverse and widely representative community, in which the best UK and

international students and academics of all backgrounds are supported and able to deliver their best work.

We're immensely grateful to everyone who has supported us through this process. I would particularly like to thank Peter Levine (1974), whose generous donation has made this project, and many other notable college-wide initiatives, possible. It is a pleasure to be able to recognise his contribution in naming our new building the Levine Building, which Peter dedicates to Sadie and Gerry Levine, his late parents.

This is a transformational moment for the college. The Levine Building is scheduled to open to students in Michaelmas term 2021. I hope you will follow its development with great interest and consider making a donation to help us realise this exciting new chapter in Trinity's history.



Dame Hilary Boulding
President



Photo credit: Betina Skovbro.

We aim to bring our community together



The Levine Building - West Elevation.

The Setting

Trinity College occupies an enviable position in the centre of the city, but it is heavily constrained – a listed garden, surrounded by listed buildings, in a conservation area. This is likely to be the last building of this scale to be constructed on this site and so we have taken the time to understand the restrictions, to explore and model options, and to refine the design brief.

It will include:

46 *en suite* study bedrooms

An auditorium to host lectures and performances

5 dedicated teaching rooms

A large flexible function room

An informal study/community area with café

A library reception, librarian's office, and wheelchair access to two floors of the library

An additional formal study area

A central administrative hub

Music practice rooms

2 student kitchens and a student laundry

Landscaping of Library Quad

View from edge of Wilderness.



View from within Library Quad.



The North Elevation

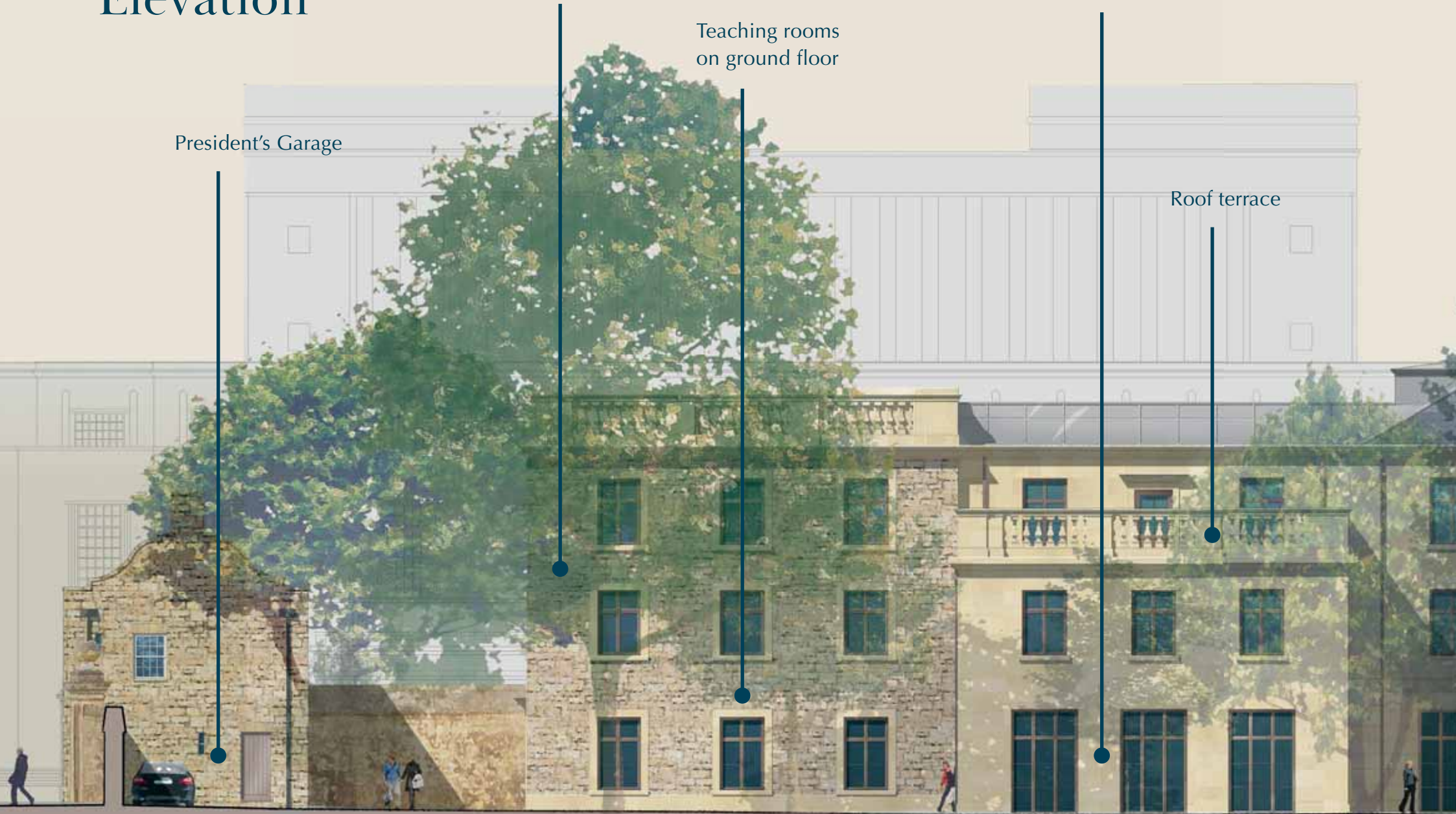
This wing will be built in square coursed rubble stone to be in keeping with existing buildings. The rest of the building will be built in ashlar

Large function room on ground floor

Teaching rooms on ground floor

President's Garage

Roof terrace



Student bedrooms and amenities on first and second floors

Informal study/community area with café on ground floor

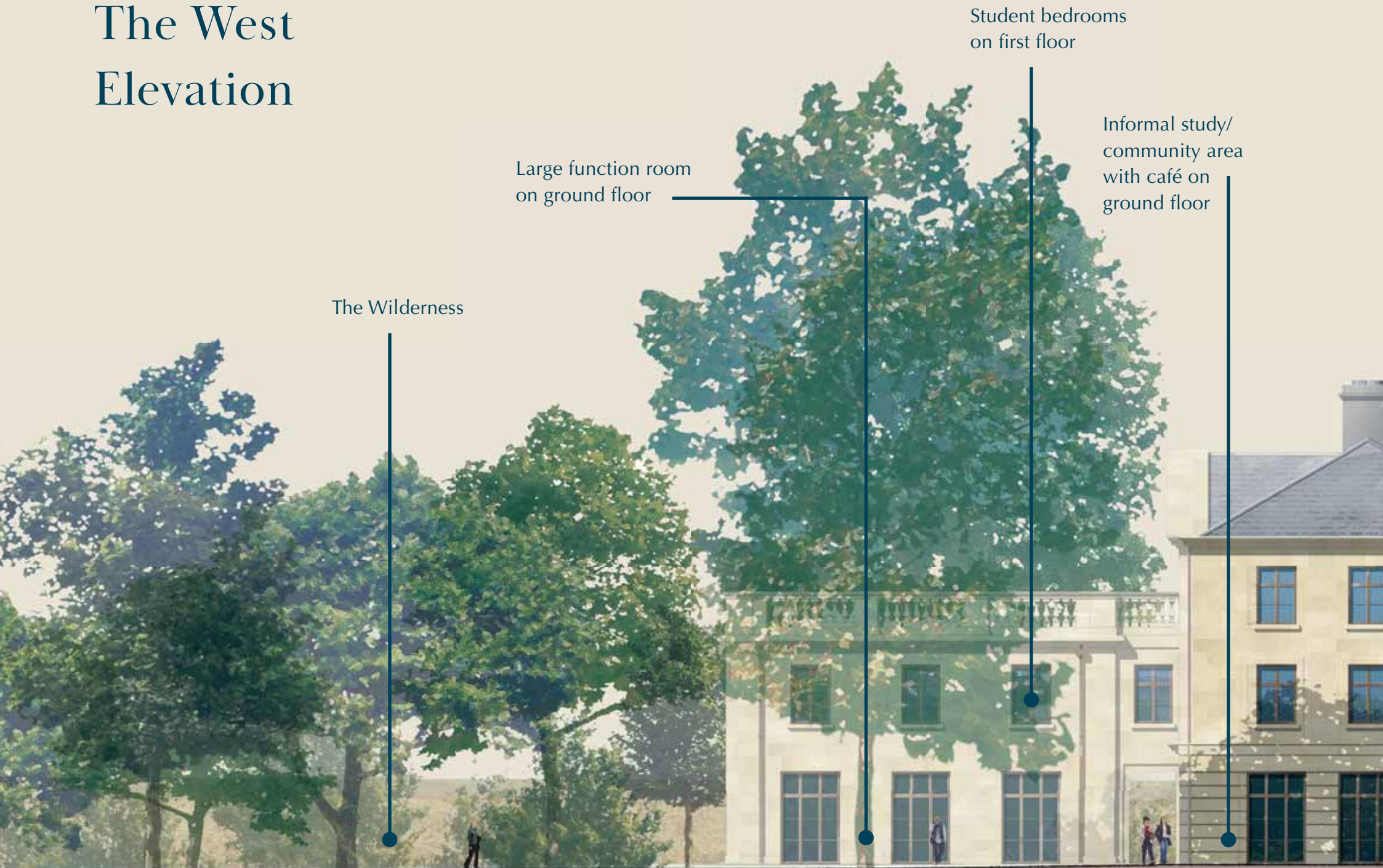
Auditorium

Administrative hub on first floor

Main entrance



The West Elevation



The Wilderness

Large function room
on ground floor

Student bedrooms
on first floor

Informal study/
community area
with café on
ground floor

Library foyer, to include a librarian's office, reception area and a mezzanine level with additional formal study space

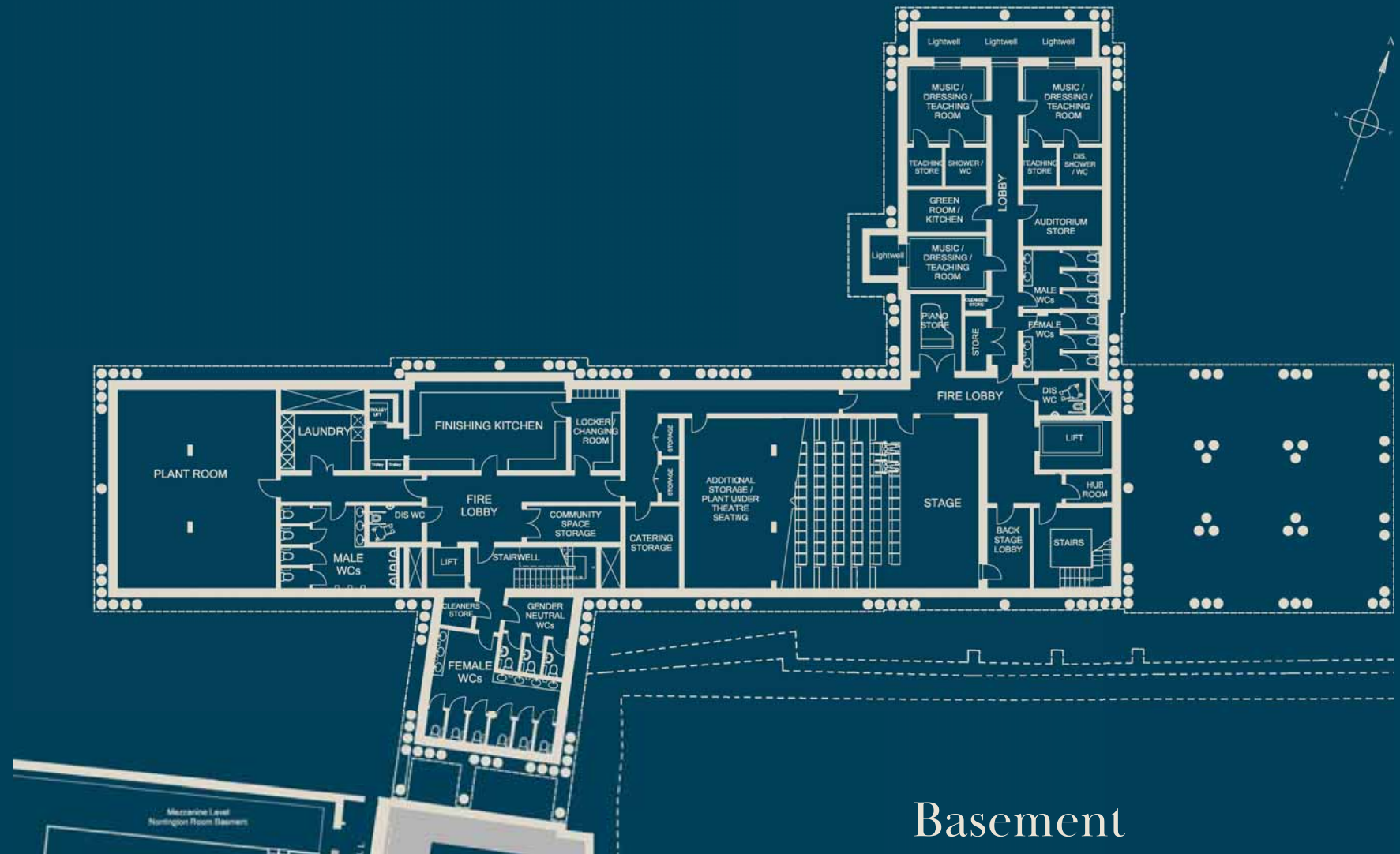
War Memorial Library

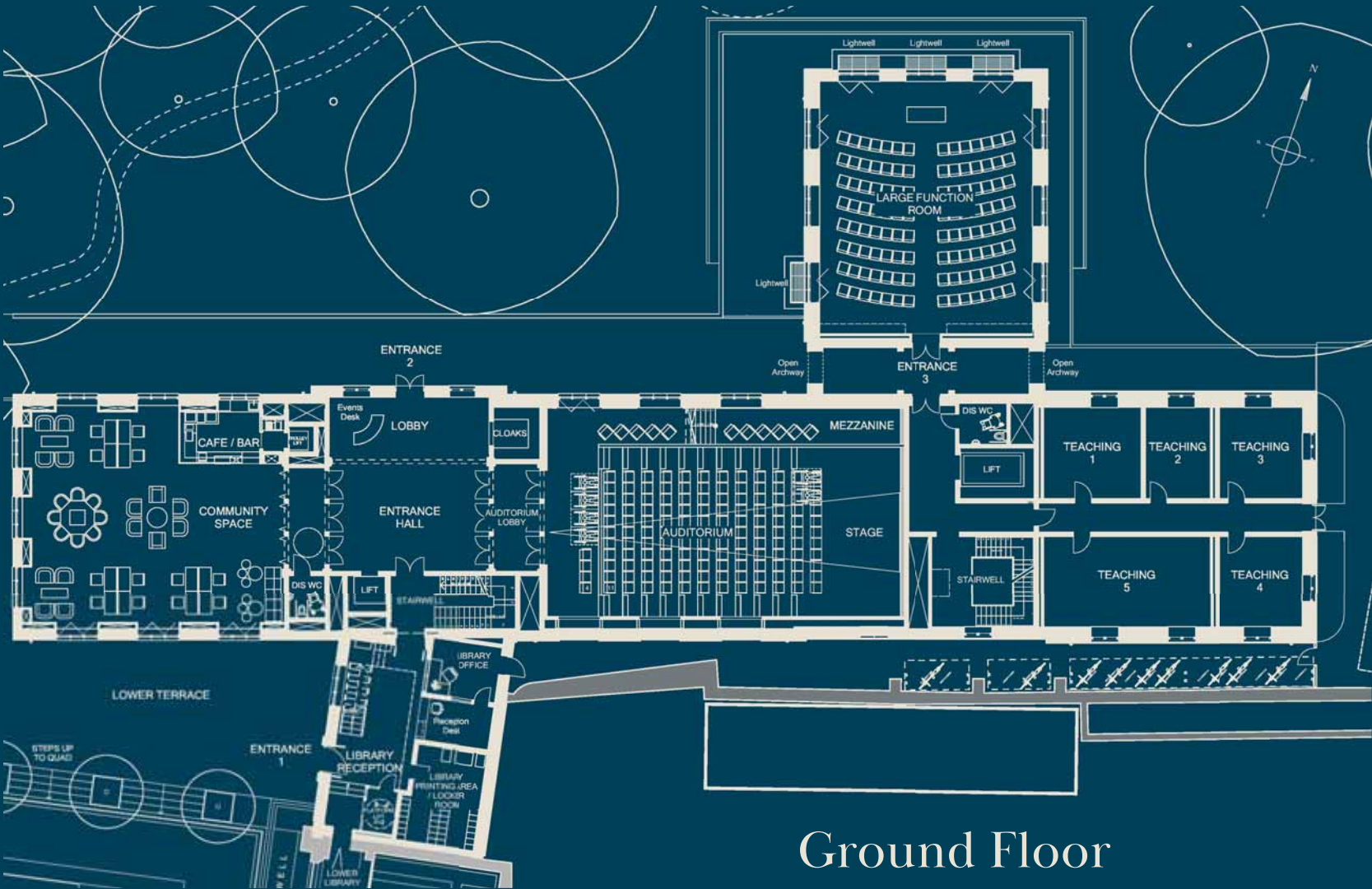


The Plans

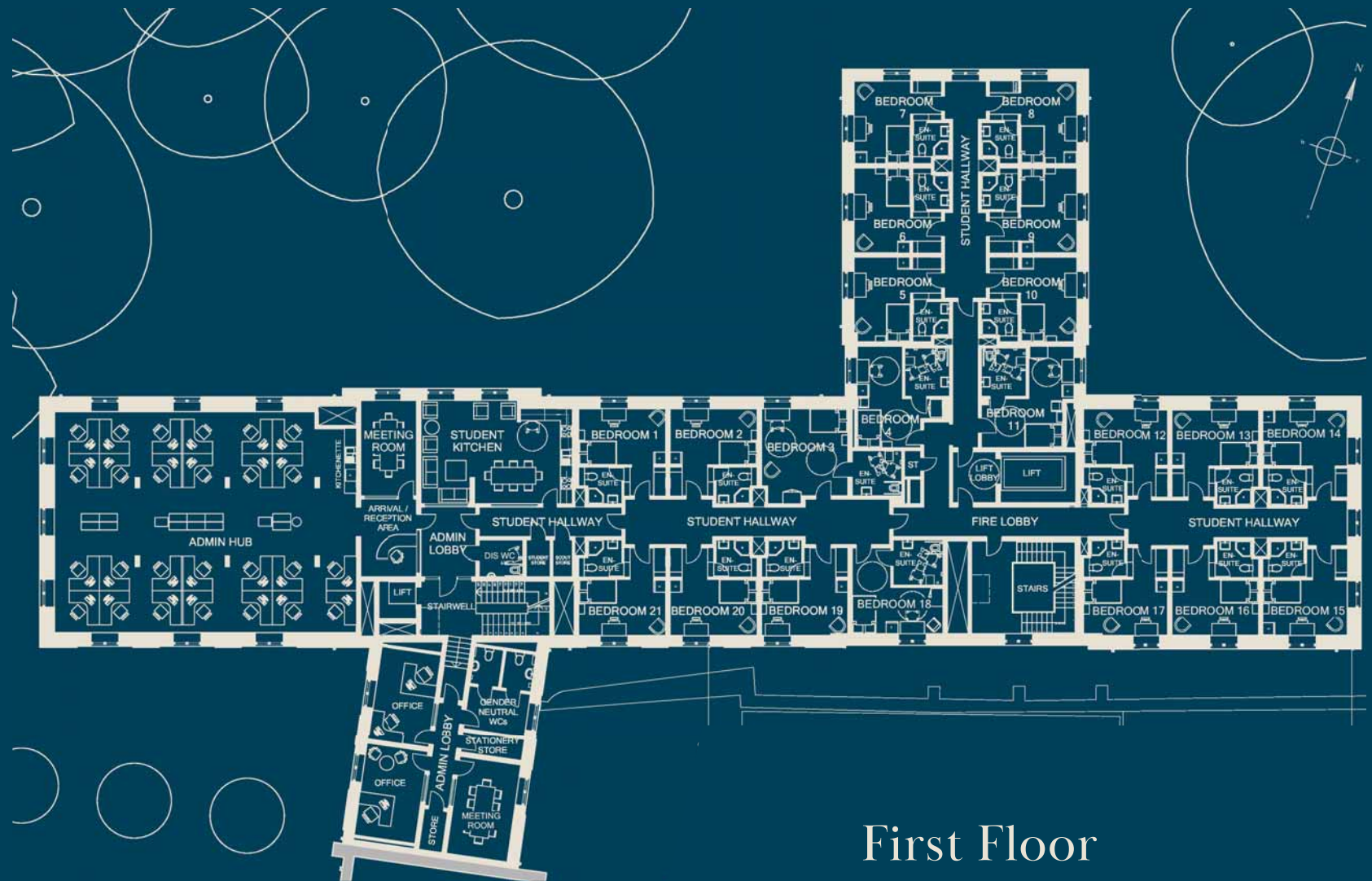
The building will have four distinct elements. The three-storey east wing, facing Parks Road, is set behind the President's Garage, with the Weston Library to the south. It will be built in square coursed rubble stone to be in keeping with the surrounding buildings. It will house a series of generously sized teaching rooms and a stairwell and lift will provide access to student bedrooms above. To the north of this section a two-storey wing will project into the Wilderness. A large function room will sit at ground floor level and a roof terrace will add valuable space, particularly in the summer months.

The main three-storey section sits further to the west and will house the auditorium, main entrance hall, administrative hub and informal study/community area, which will open out onto the Library Quad. It will connect to the War Memorial Library via a wing to the south, on the site of the former Cumberbatch Building. This will provide a new entrance to the library, a reception, a librarian's office and on a mezzanine level, additional formal study spaces. A lift will create disabled access to two floors of the library.

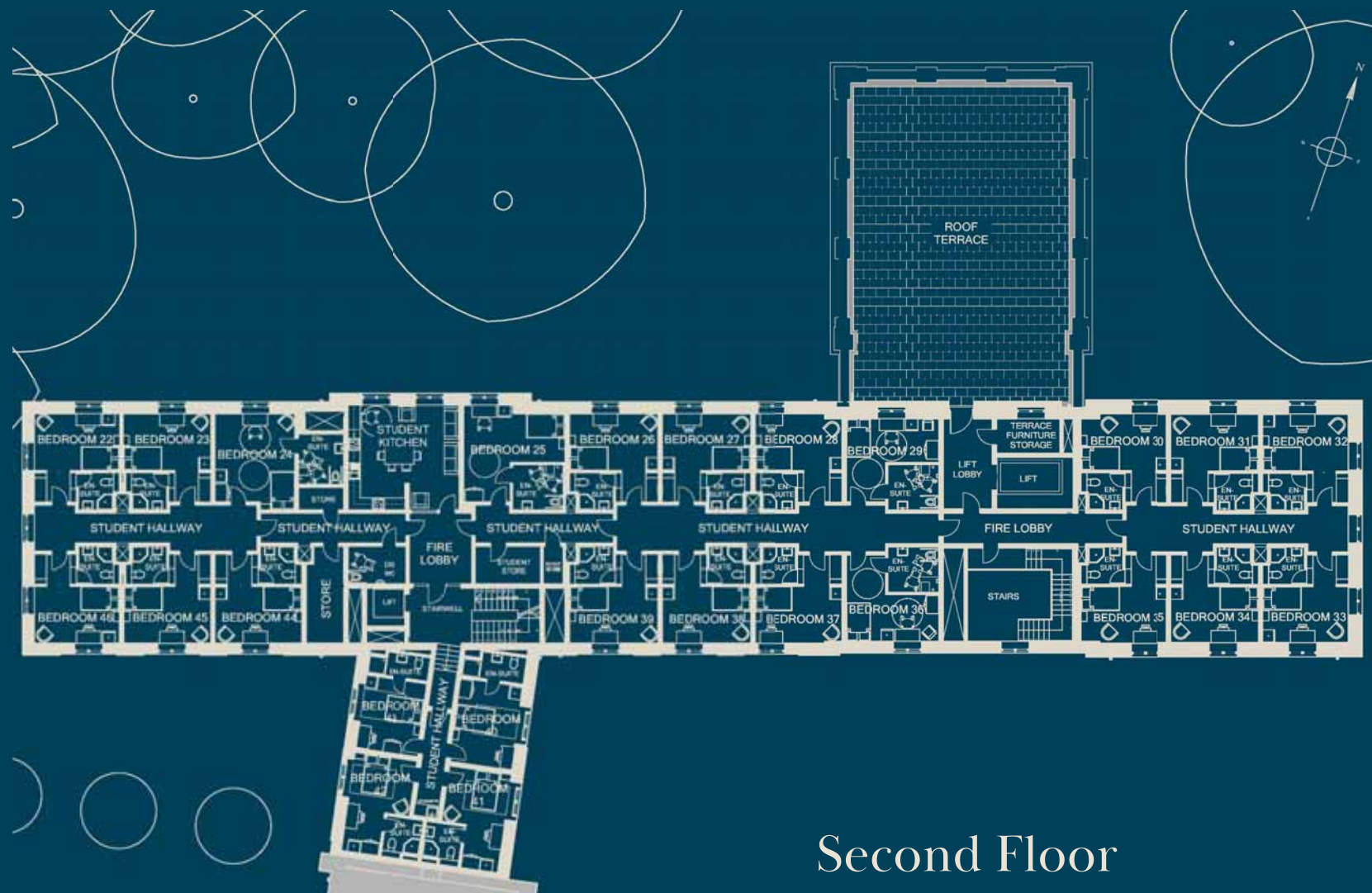




Ground Floor



First Floor



Second Floor

The Design

The building will meet the highest standards of quality, sustainability and energy efficiency. Its interior will remain flexible, so that it can be reconfigured as the needs of the college change and develop over time. This is a building that has been designed to serve Trinity for hundreds of years.



The Levine Building - North Elevation.

Auditorium preliminary concept.





Function Room preliminary concept.

Entrance hall preliminary concept.





Informal study/community space preliminary concept.

Photo credit: John Cairns.



Transforming the Student Experience

Our students' needs are uppermost in our minds. We aim to support them academically, socially, and to ensure their well-being. These plans are designed to achieve this. Students will benefit from 46 spacious *en suite* study bedrooms, along with two kitchens and a new student laundry. The library will be improved through the addition of a reception area, librarian's office and 20 additional formal study spaces. Student services will be easier to access via a central office. Music practice rooms and an auditorium capable of accommodating performances will enhance their leisure activities and a café, overlooking the wilderness, will provide a space for meetings, informal study and socialising. The building will also allow us to better serve the needs of disabled students through the creation of eight fully-accessible bedrooms, fully DDA-compliant teaching, lecture and ancillary facilities, and permanent wheelchair access to two floors of the existing library.

Inspiring & Engaging

Photo credit: John Cairns.



Teaching and research sit at the heart of our mission. We aspire to create a platform for the ground-breaking work of our academics and to inspire the next generation, by creating world-class facilities for teaching and public outreach.

This will be achieved with a comprehensive range of purpose-built rooms, all of which can be used separately or in flexible combinations. The plans include a 140-seat auditorium, five dedicated teaching rooms and a large function room that is suitable for conferences, lectures and seminars.

Strengthening the College Community

Trinity values its strong sense of community: several new spaces will be created to bring people together. The largest of these will be the informal study/community area, which will also include a café for the use of Trinity members and visitors. A terrace with external seating will extend this space into the Library Quad, which will be landscaped to include a raised lawn with seating, making it a much more attractive and inviting space.

New facilities will allow us to free up rooms across the historic estate to provide additional study bedrooms which, in turn, will enable us to offer on-site accommodation to all first year graduates. This will enhance the individual experience for graduates, strengthen the academic community, and allow all other members of College to benefit from the distinctive qualities that graduates bring to Trinity.



Photo credit: John Cairns.

Making Your Contribution

The project will cost £30 million. Half of the cost will be met by the college through agreed land sales and the additional £15 million will be sought in donations. At the time planning permission was granted in October 2018, over half of this ambitious target had already been met. We are confident, especially with the support of the college's 5,500 Old Members and Friends, that we will raise the remaining £7 million.

We also continue to invite support for other priorities, namely graduate scholarships, teaching and research, hardship bursaries, and our expanding programme of access activity.

We hope very much that you will consider supporting this project by completing the donation form provided or by visiting www.trinity.ox.ac.uk/levinebuilding. If you are considering making a donation at a level that will link your name to the project, either individually or as part of a group, please contact Sue Broers on:

T +44 (0)1865 279 889

E sue.broers@trinity.ox.ac.uk.



LEVINE BUILDING DONATION FORM

From within the UK, please return to: **FREEPOST TRINITY COLLEGE** From outside the UK: Alumni & Development Office, Trinity College, Oxford, OX1 3BH UK or make a gift online at www.trinity.ox.ac.uk/levinebuilding

MY DETAILS

Name

Address

Telephone

Email

☐ I wish my gift to remain anonymous. ☐ I wish to (continue to) receive communications from Trinity by email.

GIFT AID DECLARATION (UK TAX PAYERS ONLY)

Please treat this, and all other qualifying gifts I make to Trinity College, as a Gift Aid donation. I am a UK taxpayer and understand that if I pay less Income Tax and/or Capital Gains Tax than the amount of Gift Aid claimed on all my donations in that tax year, it is my responsibility to pay any difference.

Signed

Date

giftaid it

SINGLE GIFT

I would like to make a gift of _____ (please specify currency)

BANK CHEQUE OR UK CHARITY VOUCHER

☐ I enclose a bank cheque or charity voucher made payable to Trinity College.

DEBIT OR CREDIT CARD

Please charge my Visa/Mastercard/AMEX (donations will be charged in £ sterling)

Card Number

--	--	--	--	--	--	--	--	--	--	--	--	--	--	--	--	--	--

Expiry Date

--	--	--	--	--	--

BANK TRANSFER

The following details can be used to make a transfer into the college's account. To help us identify your gift, we would be grateful if you would notify the office of the transfer, on +44(0)1865 279941 or development@trinity.ox.ac.uk and use your surname as the payment's reference.

Account name: Trinity College Development Fund

Account number: 50901725

Sort Code: 20-65-26

SWIFTBIC: BARCGB22

IBAN: GB44 BARC 2065 2650 9017 25

REGULAR GIFT (FROM UK ACCOUNTS ONLY)

I would like to make a gift of £ _____ a month/quarter/year (delete as appropriate)

Starting on

D	D	M	M	Y	Y
---	---	---	---	---	---

 (date) For a period of

--	--

 years

STANDING ORDER

Please deduct the above payments from my account

Account Number

--	--	--	--	--	--	--	--

Sort Code

--	--	--	--	--	--

Bank's Name

Bank's Address

Signed

Date

Please pay to:

Barclays Bank plc. PO Box No 333. OXFORD OX1 3HS

Trinity College Development Fund

Account No: 50901725

Sort Code: 20-65-26

PLEASE DO NOT SEND THIS FORM TO YOUR BANK

Thank you for your support • Alumni & Development Office • Trinity College • Oxford • OX1 3BH • +44(0)1865 279941 • development@trinity.ox.ac.uk • www.trinity.ox.ac.uk • Trinity College is a registered charity, number 1143755

PLEASE TURN OVER

USE OF YOUR DATA

Trinity College wants to ensure that the details held about you are up to date and to communicate with you in accordance with your wishes. Your data will continue to be used for communications, invitations and fundraising activities by post, email and telephone unless you indicate otherwise.

If at any time your details change or you wish to change the type of communications sent to you, then please contact us.

Information is held securely on the Alumni & Development Office database. Your contact details and other information may be shared with Emeritus Fellows (in order to contact former students), the University of Oxford and external agencies that process data on behalf of the college (e.g. mailing houses, direct debit bureaux and banks). Your data will not be sold, or disclosed to other parties, except if we are required to do so by law.

Full details about how your information is held and used are set out in our Privacy Policy at <https://www.trinity.ox.ac.uk/oldmembers/privacy-statement/> and hard copies can be requested by contacting the Alumni and Development Office. If at any time you have any queries about the use of your personal data, please write to Alumni and Development Office, Trinity College, Oxford OX1 3BH or email alumni@trinity.ox.ac.uk.

